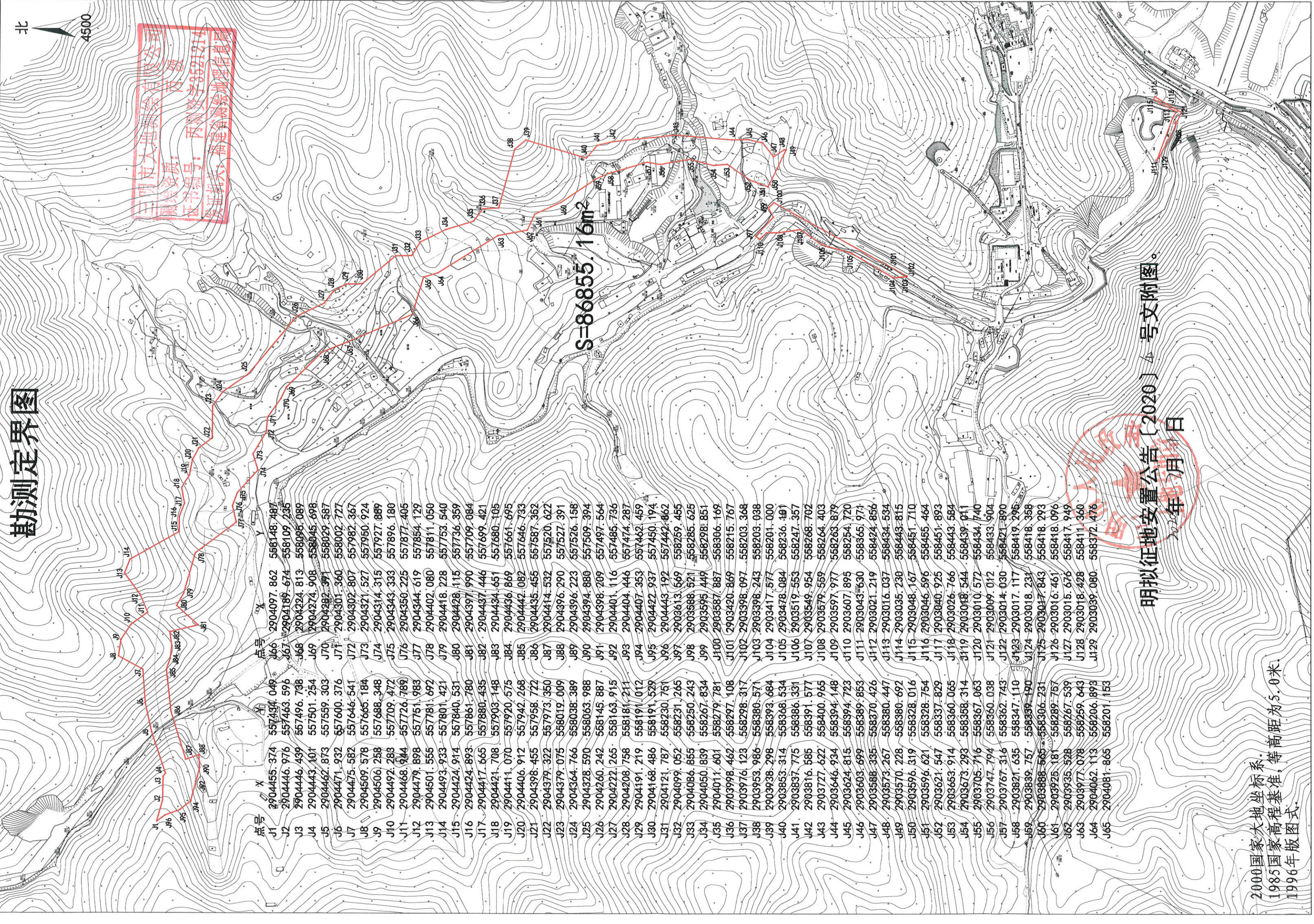


# 勘测定界图

北  
4500

三明市大地测绘有限公司  
 资质证书号：丙测资字35212114  
 发证机关：福建省自然资源厅



点号	X	Y
J1	2904455.374	5574374.049
J2	2904446.976	557463.596
J3	2904446.439	557496.738
J4	2904443.101	557501.254
J5	2904462.873	557559.303
J6	2904471.932	557600.376
J7	2904475.582	557646.541
J8	2904509.578	557665.184
J9	2904506.258	557688.348
J10	2904492.283	557709.472
J11	2904468.944	557726.789
J12	2904479.898	557751.983
J13	2904501.555	557781.692
J14	2904493.933	557801.421
J15	2904424.914	557840.531
J16	2904424.893	557861.780
J17	2904417.665	557880.435
J18	2904421.708	557903.148
J19	2904411.070	557920.575
J20	2904406.912	557942.268
J21	2904398.455	557958.722
J22	2904379.322	557973.350
J23	2904379.075	558019.009
J24	2904364.766	558038.389
J25	2904328.590	558063.988
J26	2904260.242	558145.887
J27	2904222.265	558163.915
J28	2904208.758	558181.211
J29	2904191.219	558191.012
J30	2904168.486	558191.529
J31	2904121.787	558230.751
J32	2904099.052	558231.265
J33	2904086.855	558250.243
J34	2904050.889	558267.834
J35	2904011.601	558279.781
J36	2903998.462	558297.108
J37	2903976.123	558298.317
J38	2903953.986	558380.571
J39	2903938.298	558393.684
J40	2903853.314	558368.534
J41	2903837.775	558386.331
J42	2903816.585	558391.577
J43	2903727.622	558400.965
J44	2903646.934	558394.148
J45	2903624.815	558394.723
J46	2903603.699	558389.853
J47	2903588.335	558370.426
J48	2903573.267	558380.447
J49	2903570.228	558380.692
J50	2903596.319	558328.016
J51	2903596.621	558328.754
J52	2903621.547	558337.829
J53	2903653.914	558360.065
J54	2903673.293	558358.314
J55	2903705.716	558367.063
J56	2903747.794	558360.038
J57	2903767.316	558362.743
J58	2903821.635	558347.110
J59	2903839.757	558339.190
J60	2903898.565	558306.231
J61	2903925.181	558289.757
J62	2903935.528	558267.539
J63	2903977.078	558259.643
J64	2904062.113	558206.893
J65	2904081.865	558201.153
J66	2904097.862	558148.487
J67	2904189.674	558109.235
J68	2904224.813	558098.089
J69	2904274.908	558045.698
J70	2904282.391	558029.587
J71	2904301.360	558002.727
J72	2904302.807	557982.367
J73	2904321.527	557950.924
J74	2904314.315	557927.889
J75	2904343.333	557896.180
J76	2904350.225	557877.405
J77	2904344.619	557854.129
J78	2904402.080	557811.050
J79	2904418.228	557753.540
J80	2904428.115	557736.359
J81	2904397.990	557709.084
J82	2904437.446	557699.421
J83	2904434.651	557680.105
J84	2904436.869	557661.695
J85	2904442.082	557646.733
J86	2904435.455	557587.362
J87	2904414.532	557520.622
J88	2904396.290	557527.391
J89	2904396.223	557526.158
J90	2904394.880	557509.394
J91	2904398.209	557497.564
J92	2904401.116	557485.736
J93	2904404.446	557474.287
J94	2904407.353	557462.459
J95	2904422.937	557450.194
J96	2904443.192	557442.862
J97	2903813.569	558259.455
J98	2903888.521	558285.625
J99	2903595.449	558298.851
J100	2903587.887	558306.169
J101	2903420.869	558215.767
J102	2903398.097	558203.368
J103	2903398.243	558203.098
J104	2903417.577	558201.000
J105	2903478.084	558236.167
J106	2903519.553	558247.357
J107	2903549.954	558268.702
J108	2903579.559	558264.403
J109	2903597.977	558263.879
J110	2903607.895	558254.720
J111	2903043.630	558365.971
J112	2903021.219	558424.856
J113	2903016.037	558434.534
J114	2903035.230	558443.815
J115	2903048.167	558451.710
J116	2903046.596	558455.464
J117	2903040.925	558451.893
J118	2903026.766	558443.584
J119	2903018.544	558439.011
J120	2903010.572	558434.740
J121	2903009.012	558433.904
J122	2903014.030	558421.890
J123	2903017.117	558419.296
J124	2903018.231	558418.368
J125	2903017.843	558418.293
J126	2903016.461	558418.096
J127	2903015.676	558417.949
J128	2903018.428	558411.360
J129	2903039.080	558372.476

S=86855.16m²

明拟征地安置公告〔2020〕4号文附图。

2020年7月1日

2000国家大地坐标系。  
 1985国家高程基准，等高距为5.0米。  
 1996年版图式。