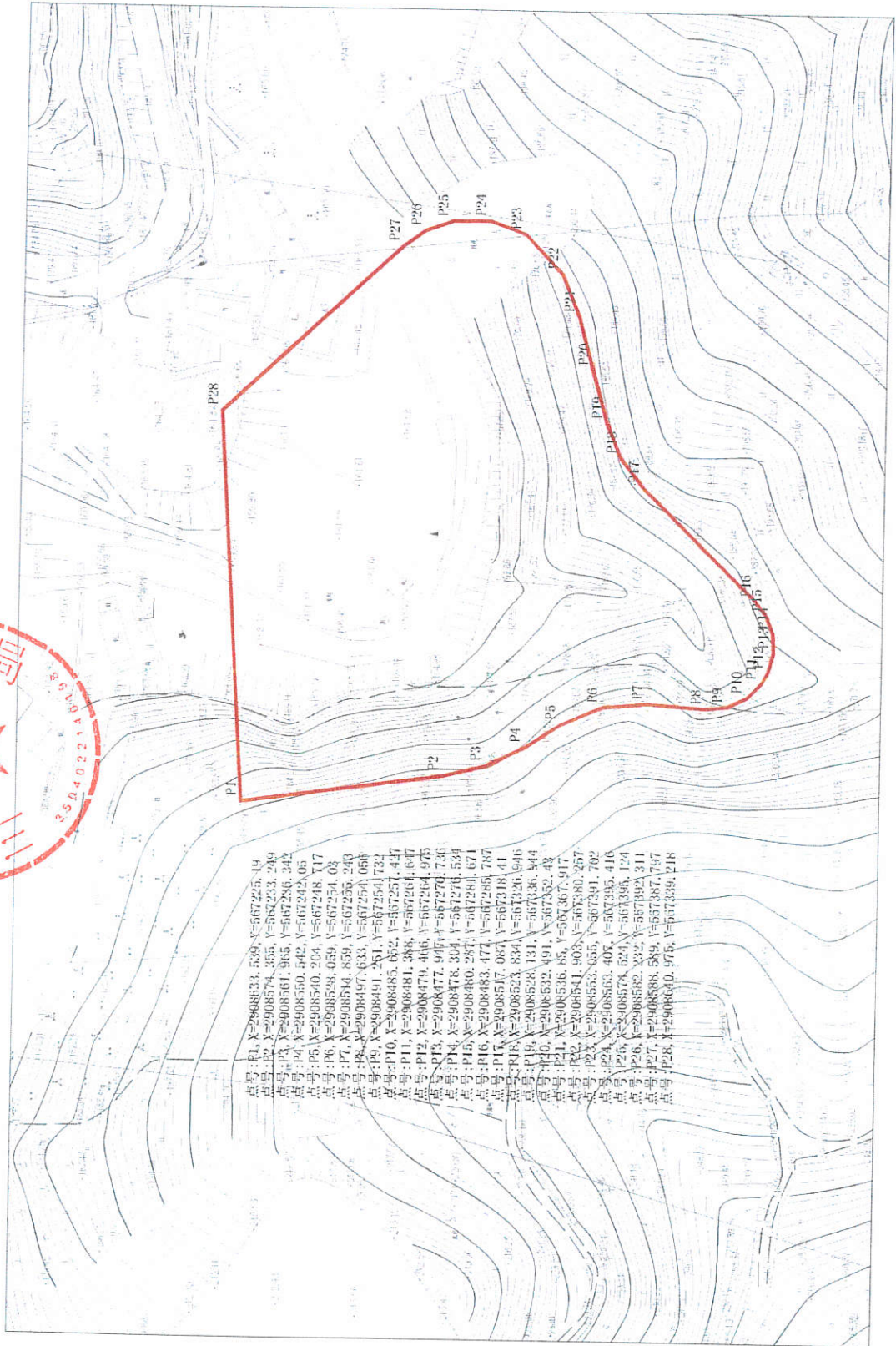


附件 1: 三元区贵溪洋 J-12 地块规划意见红线图 (2000 坐标系)



- 点号: P1, X=2908533.539, Y=567225.19
- 点号: P2, X=2908574.355, Y=567233.249
- 点号: P3, X=2908561.965, Y=567286.342
- 点号: P4, X=2908550.542, Y=567242.05
- 点号: P5, X=2908540.204, Y=567248.717
- 点号: P6, X=2908528.059, Y=567254.03
- 点号: P7, X=2908514.859, Y=567256.243
- 点号: P8, X=2908497.633, Y=567254.056
- 点号: P9, X=2908491.261, Y=567254.732
- 点号: P10, X=2908485.652, Y=567257.447
- 点号: P11, X=2908481.388, Y=567261.647
- 点号: P12, X=2908479.406, Y=567264.975
- 点号: P13, X=2908477.997, Y=567270.736
- 点号: P14, X=2908478.304, Y=567276.524
- 点号: P15, X=2908480.287, Y=567281.671
- 点号: P16, X=2908483.477, Y=567285.767
- 点号: P17, X=2908517.087, Y=567318.41
- 点号: P18, X=2908523.834, Y=567326.946
- 点号: P19, X=2908528.131, Y=567336.344
- 点号: P20, X=2908532.491, Y=567352.43
- 点号: P21, X=2908536.85, Y=567367.917
- 点号: P22, X=2908541.403, Y=567380.957
- 点号: P23, X=2908553.055, Y=567391.702
- 点号: P24, X=2908563.407, Y=567395.410
- 点号: P25, X=2908579.624, Y=567398.124
- 点号: P26, X=2908582.332, Y=567402.311
- 点号: P27, X=2908588.589, Y=567407.797
- 点号: P28, X=2908610.975, Y=567439.218