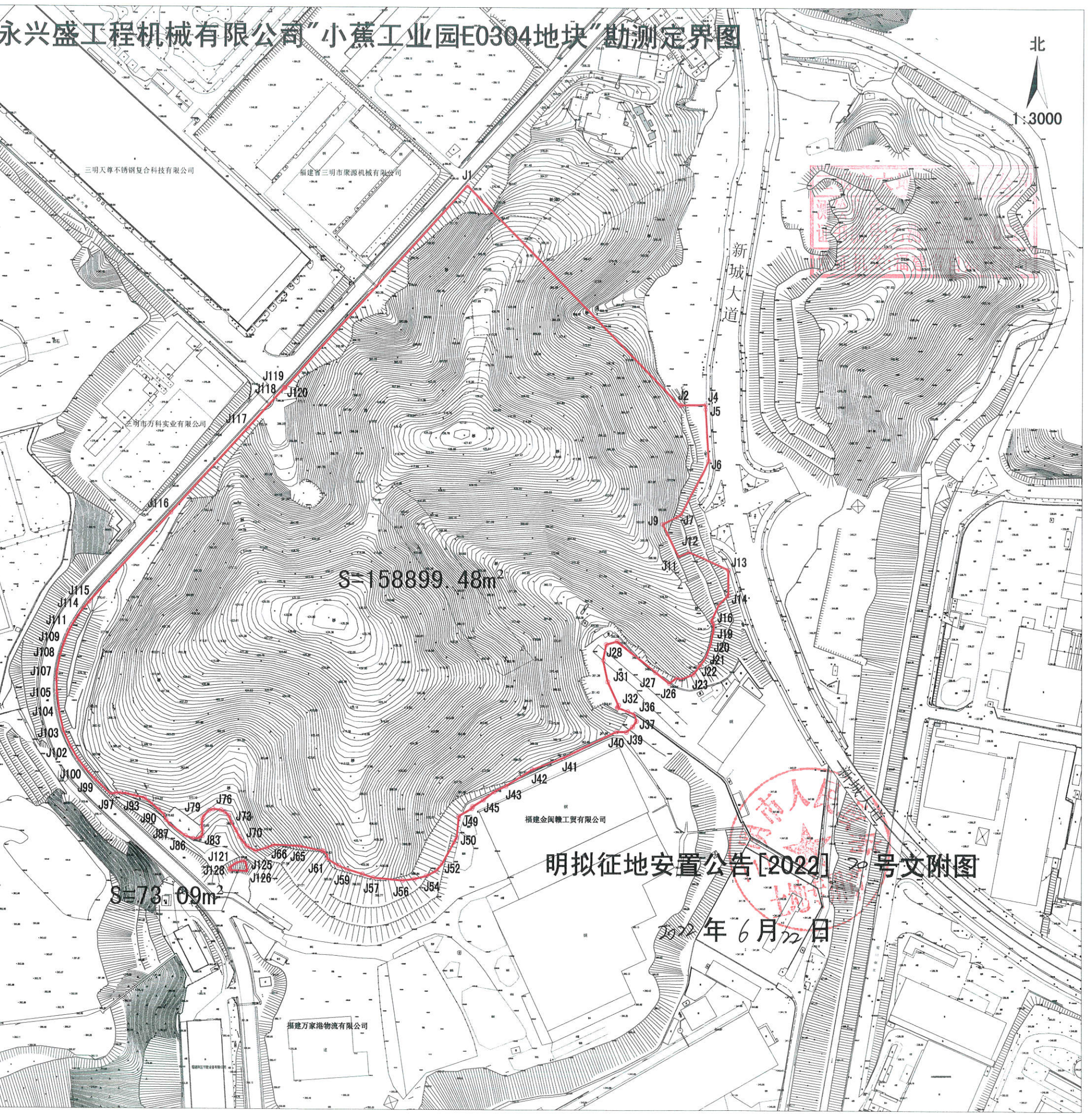


# 三明市永兴盛工程机械有限公司“小蕉工业园E0304地块”勘测定界图

北

1:3000

点号	X	Y	点号	X	Y
J1	2908677.649	39556265.617	J65	2908174.725	39556139.231
J2	2908511.462	39556429.819	J66	2908175.408	39556118.755
J3	2908511.483	39556430.879	J67	2908173.196	39556113.820
J4	2908511.847	39556449.327	J68	2908170.814	39556105.353
J5	2908508.444	39556449.263	J69	2908174.319	39556098.695
J6	2908469.010	39556451.883	J70	2908178.023	39556095.520
J7	2908427.855	39556430.746	J71	2908181.463	39556092.874
J8	2908426.248	39556427.526	J72	2908186.490	39556090.228
J9	2908420.837	39556416.684	J73	2908192.311	39556086.788
J10	2908413.471	39556420.360	J74	2908197.338	39556084.672
J11	2908395.784	39556429.187	J75	2908200.248	39556081.761
J12	2908399.638	39556436.910	J76	2908201.571	39556078.851
J13	2908385.928	39556467.211	J77	2908202.365	39556072.765
J14	2908366.311	39556467.211	J78	2908201.307	39556069.590
J15	2908359.658	39556460.115	J79	2908196.280	39556065.092
J16	2908346.933	39556454.219	J80	2908193.105	39556064.563
J17	2908345.109	39556455.131	J81	2908189.136	39556064.299
J18	2908343.332	39556456.019	J82	2908184.902	39556064.828
J19	2908338.834	39556455.490	J83	2908181.992	39556064.563
J20	2908328.251	39556453.374	J84	2908180.140	39556061.653
J21	2908320.048	39556450.463	J85	2908179.875	39556057.684
J22	2908312.375	39556444.907	J86	2908181.992	39556051.863
J23	2908306.025	39556440.144	J87	2908190.723	39556040.222
J24	2908302.321	39556430.884	J88	2908194.163	39556037.047
J25	2908303.508	39556427.813	J89	2908198.132	39556035.459
J26	2908299.153	39556422.151	J90	2908201.836	39556031.490
J27	2908307.458	39556411.474	J91	2908207.127	39556025.405
J28	2908331.185	39556381.815	J92	2908210.567	39556020.642
J29	2908328.812	39556373.510	J93	2908212.155	39556013.763
J30	2908316.949	39556371.137	J94	2908213.742	39556007.149
J31	2908300.339	39556374.696	J95	2908214.007	39556003.180
J32	2908282.544	39556383.001	J96	2908214.271	39555999.211
J33	2908280.609	39556381.946	J97	2908213.272	39555995.171
J34	2908280.581	39556382.509	J98	2908224.497	39555982.976
J35	2908277.605	39556390.116	J99	2908224.613	39555982.862
J36	2908275.620	39556395.408	J100	2908232.988	39555975.080
J37	2908270.329	39556396.731	J101	2908239.658	39555969.981
J38	2908266.029	39556393.754	J102	2908249.142	39555964.137
J39	2908262.066	39556389.124	J103	2908261.674	39555958.485
J40	2908262.974	39556381.513	J104	2908276.988	39555955.109
J41	2908242.086	39556340.173	J105	2908290.746	39555953.349
J42	2908233.284	39556316.902	J106	2908300.502	39555952.874
J43	2908220.814	39556296.829	J107	2908306.215	39555953.191
J44	2908216.448	39556287.933	J108	2908318.641	39555955.520
J45	2908210.207	39556279.755	J109	2908328.178	39555958.384
J46	2908205.192	39556271.683	J110	2908335.040	39555961.172
J47	2908203.648	39556270.852	J111	2908339.154	39555963.230
J48	2908197.849	39556260.592	J112	2908343.910	39555965.827
J49	2908196.479	39556260.664	J113	2908348.111	39555968.347
J50	2908181.904	39556259.146	J114	2908355.061	39555973.377
J51	2908178.344	39556257.209	J115	2908360.067	39555977.558
J52	2908162.181	39556248.351	J116	2908428.557	39556039.435
J53	2908156.394	39556243.598	J117	2908492.645	39556097.336
J54	2908152.426	39556236.058	J118	2908523.253	39556124.988
J55	2908150.044	39556226.930	J119	2908524.178	39556125.824
J56	2908148.854	39556217.801	J120	2908523.809	39556126.186
J57	2908150.971	39556195.576	J121	2908158.469	39556085.936
J58	2908153.616	39556187.374	J122	2908161.485	39556090.381
J59	2908157.321	39556175.733	J123	2908162.914	39556094.985
J60	2908159.966	39556169.383	J124	2908162.610	39556097.494
J61	2908164.993	39556160.651	J125	2908157.747	39556098.586
J62	2908168.962	39556160.122	J126	2908155.379	39556098.968
J63	2908170.814	39556157.476	J127	2908155.928	39556086.030
J64	2908171.200	39556156.425	J128	2908156.767	39556085.408



明拟征地安置公告[2022] 20号文附图

2022年6月22日

2000国家大地坐标系  
1985国家高程基准,等高距为1.0米。  
1996年版图式