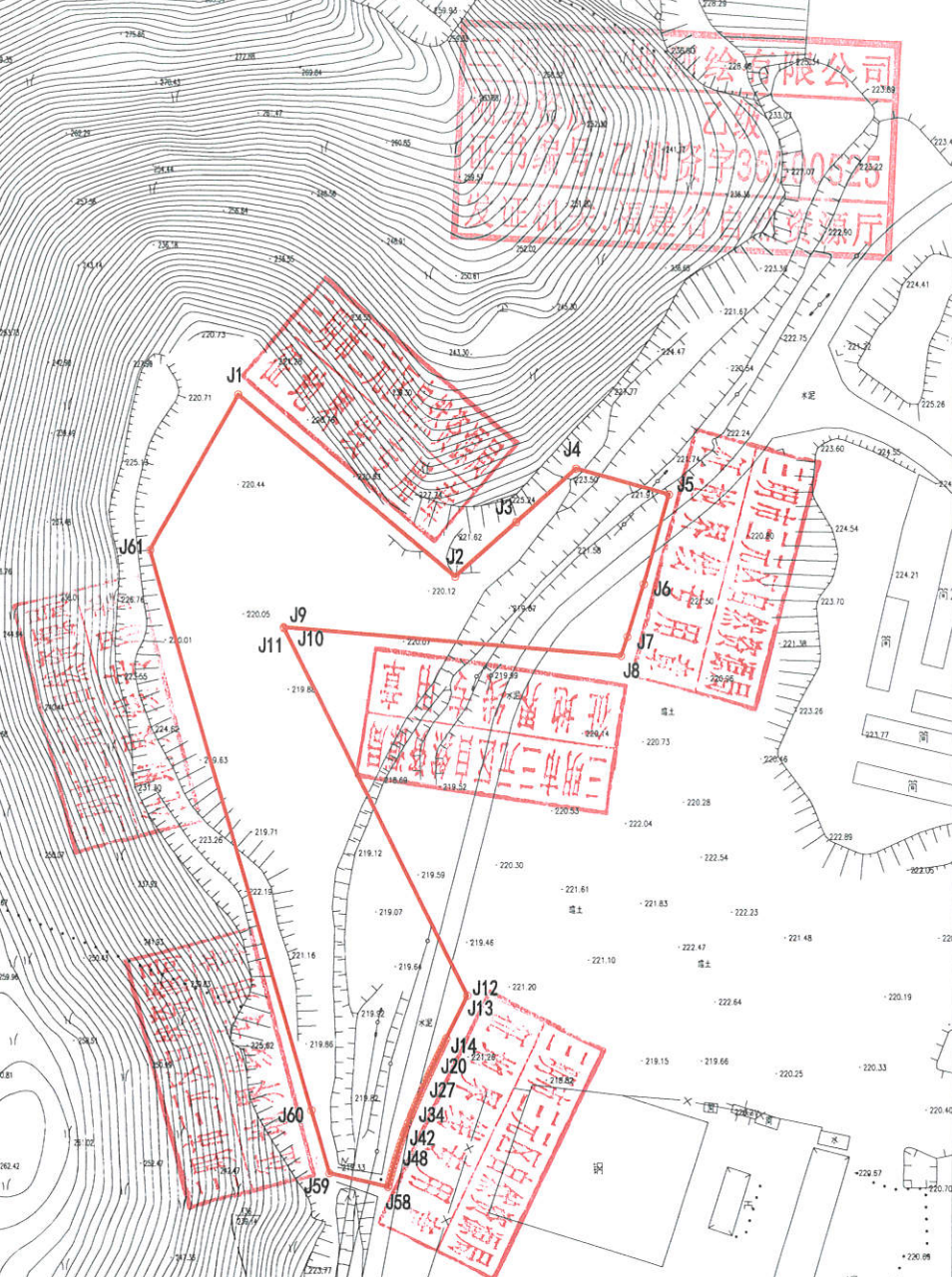


福建三明天龙气体有限公司350403-25-C-05地块(核减后)勘测定界图



点号	X	Y
J1	2899065.280	39551325.555
J2	2899017.546	39551383.704
J3	2899032.088	39551399.873
J4	2899046.283	39551415.657
J5	2899038.546	39551440.504
J6	2899015.764	39551433.923
J7	2899001.790	39551429.585
J8	2898996.755	39551427.890
J9	2899003.818	39551338.050
J10	2899003.573	39551338.174
J11	2899003.578	39551338.119
J12	2898906.169	39551387.486
J13	2898906.135	39551387.470
J14	2898894.801	39551381.996
J15	2898893.898	39551381.561
J16	2898892.993	39551381.124
J17	2898892.085	39551380.686
J18	2898891.180	39551380.251
J19	2898890.268	39551379.814
J20	2898889.353	39551379.377
J21	2898888.435	39551378.940
J22	2898887.515	39551378.504
J23	2898886.591	39551378.070
J24	2898885.663	39551377.636
J25	2898884.732	39551377.204
J26	2898883.798	39551376.774
J27	2898882.860	39551376.345
J28	2898881.918	39551375.920
J29	2898880.972	39551375.496
J30	2898880.022	39551375.076
J31	2898879.068	39551374.659
J32	2898878.110	39551374.246
J33	2898877.147	39551373.836
J34	2898876.180	39551373.430
J35	2898875.208	39551373.029
J36	2898874.219	39551372.631
J37	2898873.232	39551372.233
J38	2898873.251	39551371.841
J39	2898872.265	39551371.455
J40	2898871.274	39551371.075
J41	2898870.278	39551370.701
J42	2898869.278	39551370.333
J43	2898869.277	39551370.000
J44	2898868.272	39551369.671
J45	2898867.261	39551369.347
J46	2898866.244	39551369.028
J47	2898865.223	39551368.714
J48	2898864.196	39551368.405
J49	2898863.165	39551368.101
J50	2898862.127	39551367.802
J51	2898862.127	39551367.508
J52	2898861.085	39551367.219
J53	2898860.037	39551366.936
J54	2898858.984	39551366.659
J55	2898857.925	39551366.387
J56	2898856.861	39551366.120
J57	2898855.817	39551365.858
J58	2898855.341	39551365.601
J59	2898858.892	39551350.920
J60	2898875.477	39551346.045
J61	2899024.104	39551302.353



同意红线范围内土地作为福建三明天龙气体有限公司350403-25-C-05地块(核减后)预申请工业用地，用地面积10575.82m²。

三明市自然资源局
2022年7月23日

2000国家大地坐标系
1985国家高程基准，等高距为1.0米
1996年版图式