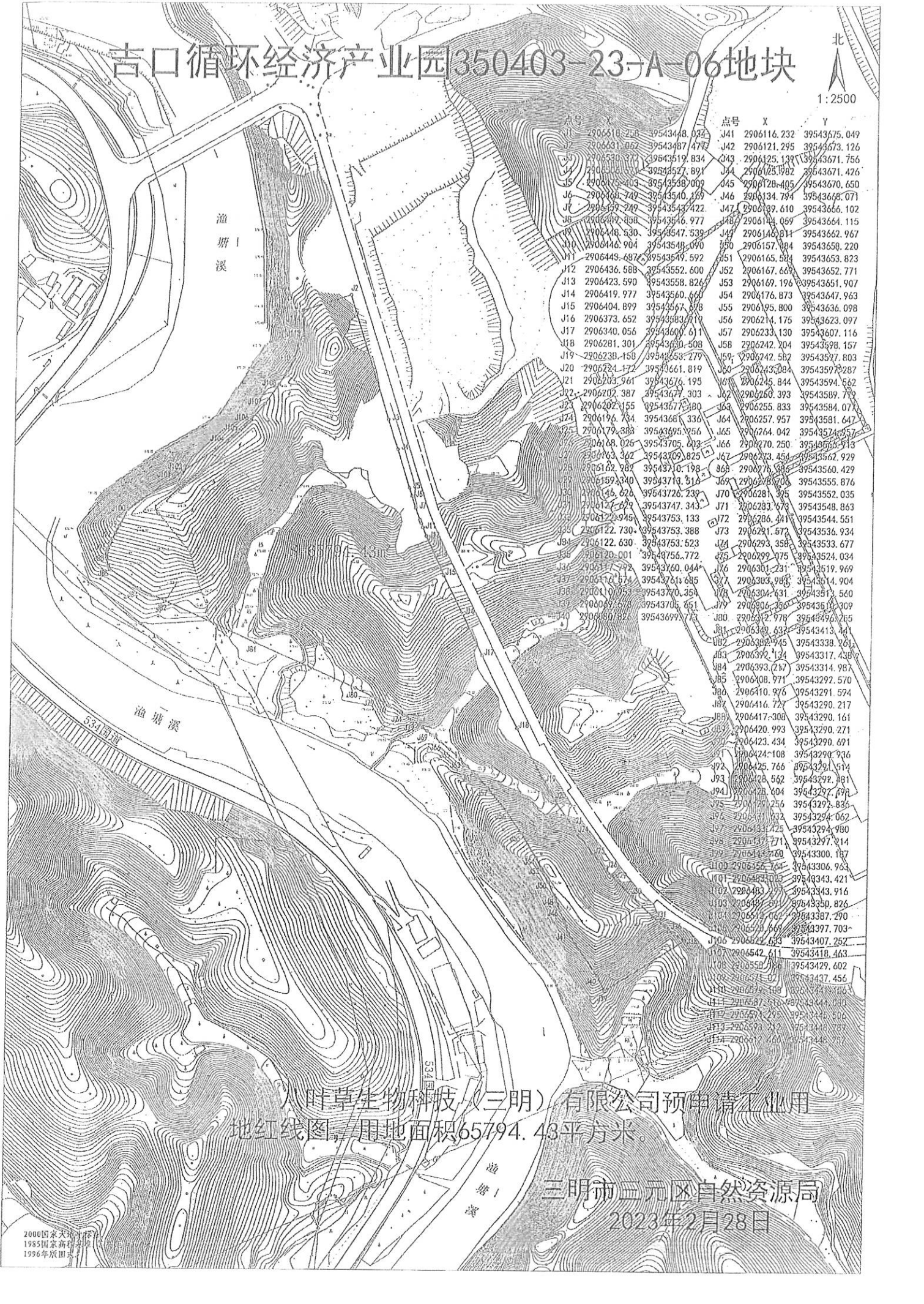


吉口循环经济产业园350403-23-A-06地块

北
1:2500



点号	X	Y
J01	2906116.232	39543675.049
J02	2906121.295	39543673.126
J03	2906125.138	39543671.756
J04	2906123.982	39543671.426
J05	2906128.493	39543670.650
J06	2906134.794	39543668.071
J07	2906139.610	39543666.102
J08	2906141.059	39543664.115
J09	2906146.811	39543662.967
J10	2906157.884	39543658.220
J11	2906165.584	39543653.823
J12	2906167.689	39543652.771
J13	2906169.196	39543651.907
J14	2906176.873	39543647.963
J15	2906195.800	39543636.098
J16	2906214.175	39543623.097
J17	2906233.130	39543607.116
J18	2906242.204	39543598.157
J19	2906242.587	39543597.803
J20	2906243.384	39543597.287
J21	2906245.844	39543594.562
J22	2906250.393	39543589.789
J23	2906255.833	39543584.071
J24	2906257.957	39543581.647
J25	2906264.042	39543574.957
J26	2906270.250	39543565.913
J27	2906273.454	39543562.929
J28	2906276.886	39543560.429
J29	2906281.706	39543555.876
J30	2906281.395	39543552.035
J31	2906283.679	39543548.863
J32	2906286.441	39543544.551
J33	2906291.572	39543536.934
J34	2906293.358	39543533.677
J35	2906299.375	39543524.034
J36	2906301.231	39543519.969
J37	2906303.986	39543514.904
J38	2906304.431	39543511.560
J39	2906306.250	39543508.309
J40	2906312.978	39543503.265
J41	2906319.632	39543493.441
J42	2906322.945	39543488.261
J43	2906329.134	39543481.438
J44	2906333.627	39543474.987
J45	2906340.971	39543467.570
J46	2906346.976	39543461.594
J47	2906354.722	39543454.217
J48	2906361.308	39543446.161
J49	2906368.993	39543437.271
J50	2906376.434	39543428.691
J51	2906384.108	39543420.936
J52	2906392.766	39543412.514
J53	2906401.562	39543403.481
J54	2906410.604	39543394.798
J55	2906420.256	39543386.836
J56	2906430.032	39543378.052
J57	2906440.425	39543369.980
J58	2906451.271	39543362.214
J59	2906462.768	39543354.187
J60	2906474.764	39543346.963
J61	2906487.023	39543339.421
J62	2906499.979	39543331.916
J63	2906513.691	39543324.826
J64	2906528.062	39543317.290
J65	2906543.069	39543309.703
J66	2906558.693	39543302.252
J67	2906574.611	39543294.463
J68	2906590.984	39543286.602
J69	2906608.072	39543278.456
J70	2906625.908	39543270.063
J71	2906644.527	39543261.444
J72	2906663.958	39543252.506
J73	2906684.212	39543243.287
J74	2906705.260	39543233.797

人叶草生物科技(三明)有限公司预申请工业用地红线图,用地面积65794.43平方米。

三明市三元区自然资源局
2023年2月28日

2000国家大地坐标系
1985国家高程基准
1996年原图